

## CREATIVITY AND EXPERTISE

A unique expertise to create tailor made products.

A true work of art, each piece is unique and hand-finished at the Ateliers Cinier in France.  
You can have your own design materialized choosing from an extensive range of finishes to feature any rendering or artwork which impacts your lifestyle.

### Selection of natural pigments of Colors.

Colors are chosen from samples of the original material and natural pigments for the colors to use are always produced the last week of fabrication.

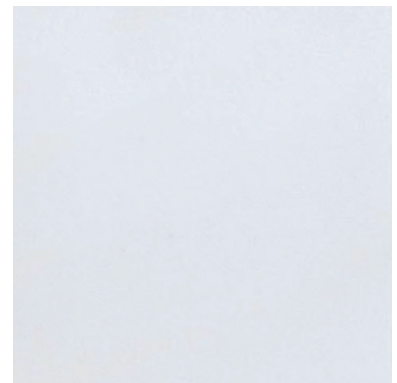
The last steps of production are all done by hand, each stroke is different therefore slight variations in color rendering may appear.

Custom finishes are available upon request.

During the product fabrication, the stone undergoes a drying stage that can make some corners turn into small curves up to 5/8" radius.

### Color chart of **pigments**

Slight variations are to be expected between the sample and the final pigment color on the radiator.



**White Olycal** | Ref. S-01  
example: UNIS



**White Olycal** | Ref. S-02  
example: FUSION



**Grey Quartz** | Ref. S-03  
example: ORIGINE

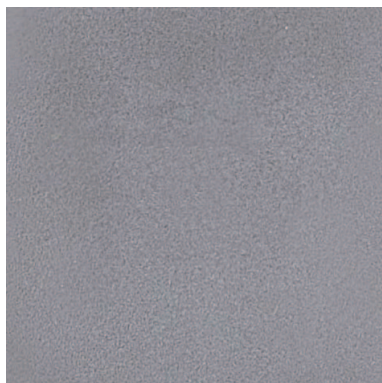


**Grey Quartz** | Ref. S-04  
example: ORIENTAL

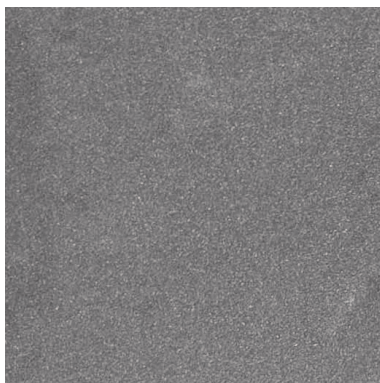
# Color chart of **pigments**

Slight variations are to be expected between the sample and the final pigment color on the radiator.

**Cinier**  
Collection  
BY PSCBATH



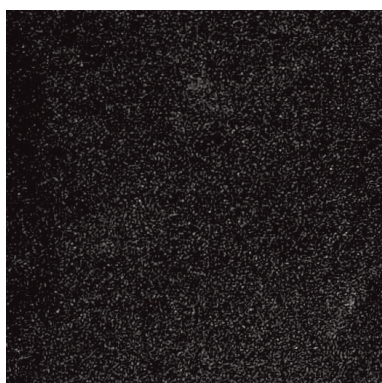
**Grey Quartz** | Ref. S-05  
example: UNIS



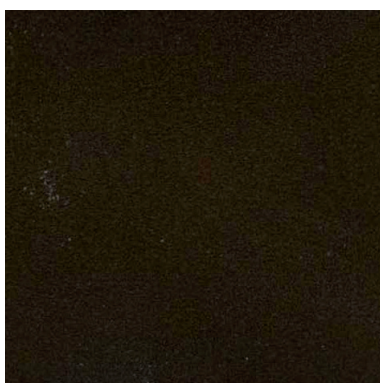
**Grey Silver** | Ref. S-06  
example: UNIS



**Dark Grey** | Ref. S-07  
example: UNIS



**Black Silver** | Ref. S-08  
example: UNIS



**Black Gun Metal** | Ref. S-09  
example: UNIS



**Slate** | Ref. S-10  
example: UNIS



**Taupe Ashok** | Ref. S-11  
example: UNIS



**Taupe** | Ref. S-12  
example: UNIS



**Lilac** | Ref. S-13  
example: UNIS



**Linen** | Ref. S-14  
example: UNIS



**Pearl** | Ref. S-15  
example: UNIS



**Ivory** | Ref. S-16  
example: UNIS



# Color chart of **pigments**

Slight variations are to be expected between the sample and the final pigment color on the radiator.

**Cinier**  
Collection  
BY PSCBATH



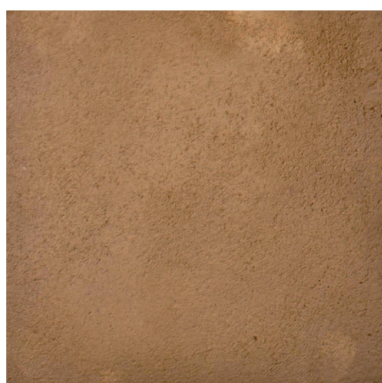
**Yellow** | Ref. S-29  
example: UNIS



**Earthy Tone** | Ref. S-30  
example: UNIS



**Light Gold** | Ref. S-31  
example: UNIS



**Old Gold** | Ref. S-32  
example: UNIS



**Burgundy** | Ref. S-33  
example: UNIS



**Provence Red** | Ref. S-34  
example: FUSION



**Fuchsia** | Ref. S-35  
example: UNIS



**Deep Red** | Ref. S-36  
example: UNIS



**Spanish Red** | Ref. S-37  
example: UNIS



**Iron Red** | Ref. S-38  
example: UNIS



**Brown Pink** | Ref. S-39  
example: UNIS



**Brown Pink** | Ref. S-40  
example: ORIENTAL



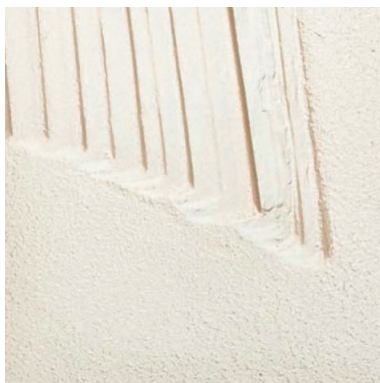
# Color chart of **pigments**

Slight variations are to be expected between the sample and the final pigment color on the radiator.

**Cinier**  
Collection  
BY PSCBATH



**Grey** | Ref. S-17  
example: UNIS



**Ivory** | Ref. S-18  
example: ORIENTAL



**Beige** | Ref. S-19  
example: UNIS



**Siena** | Ref. S-20  
example: FUSION



**Siena** | Ref. S-21  
example: UNIS



**Pearl Sand** | Ref. S-22  
example: UNIS



**Antique Pink** | Ref. S-23  
ex : modèle JEUX D'OMBRES



**Antique Pink** | Ref. S-24  
example: FUSION



**Antique Pink** | Ref. S-25  
example: UNIS



**Light Bronze** | Ref. S-26  
example: UNIS



**Gold** | Ref. S-27  
example: UNIS



**Yellow** | Ref. S-28  
example: FUSION



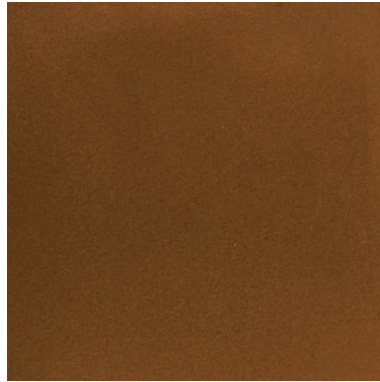
# Color chart of **pigments**

Slight variations are to be expected between the sample and the final pigment color on the radiator.

**Cinier**  
Collection  
BY PSCBATH



**Light Bronze** | Ref. S-41  
example: UNIS



**Copper** | Ref. S-42  
example: UNIS



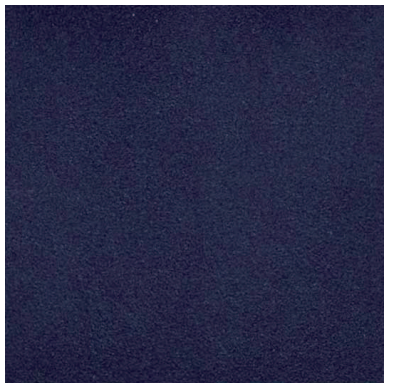
**Chocolat** | Ref. S-43  
example: UNIS



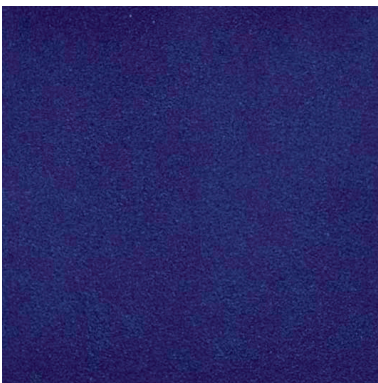
**Bronze** | Ref. S-44  
example: UNIS



**Chestnut** | Ref. S-45  
example: UNIS



**Sapphire Blue** | Ref. S-46  
example: UNIS



**Caribbean Blue** | Ref. S-47  
example: UNIS



**Green** | Ref. S-48  
example: UNIS



Additional colors are available  
upon request.